



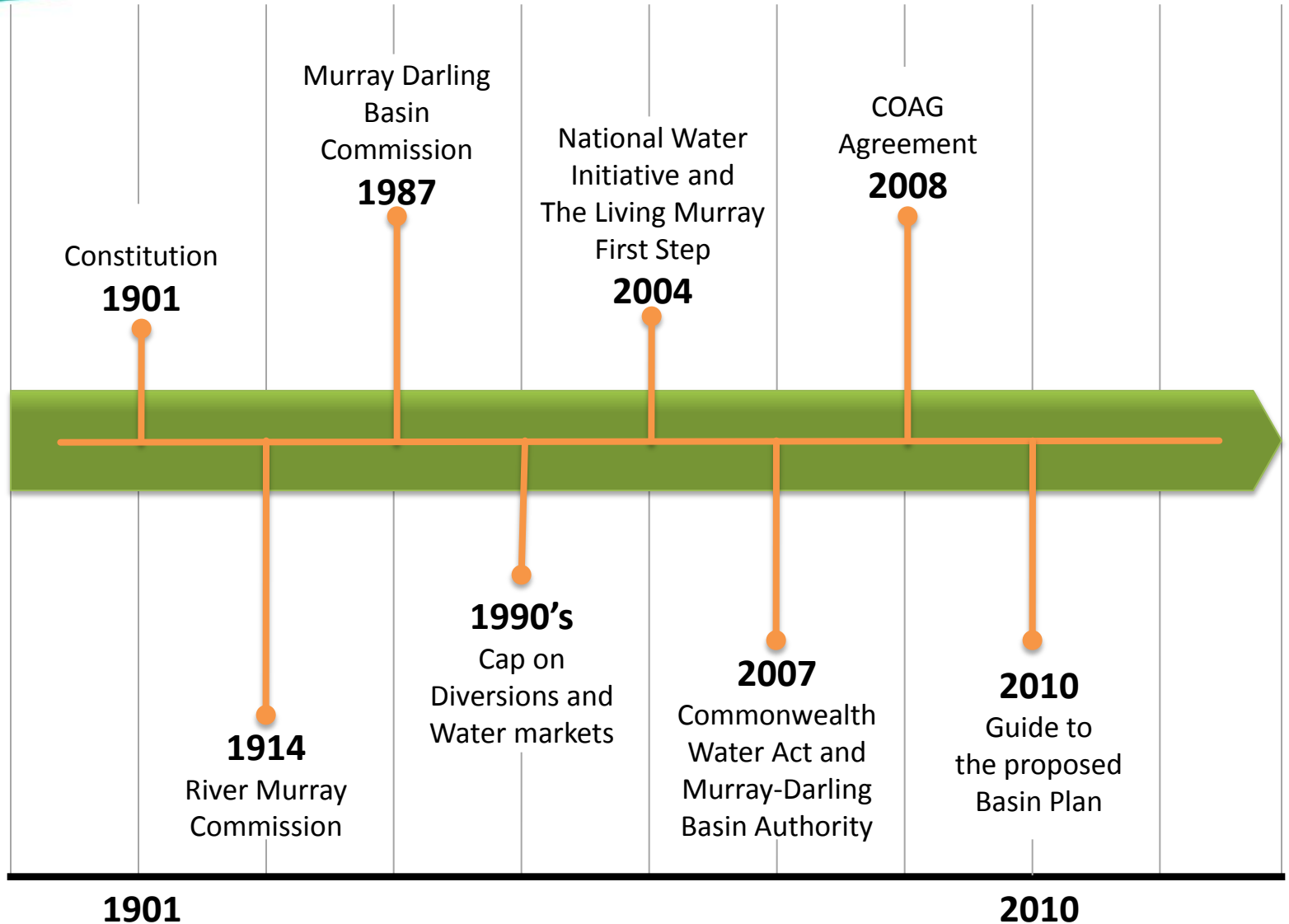
Australian Government



Current Thinking on draft Basin Plan

4 October 2011

The Basin - A Long History



What we heard

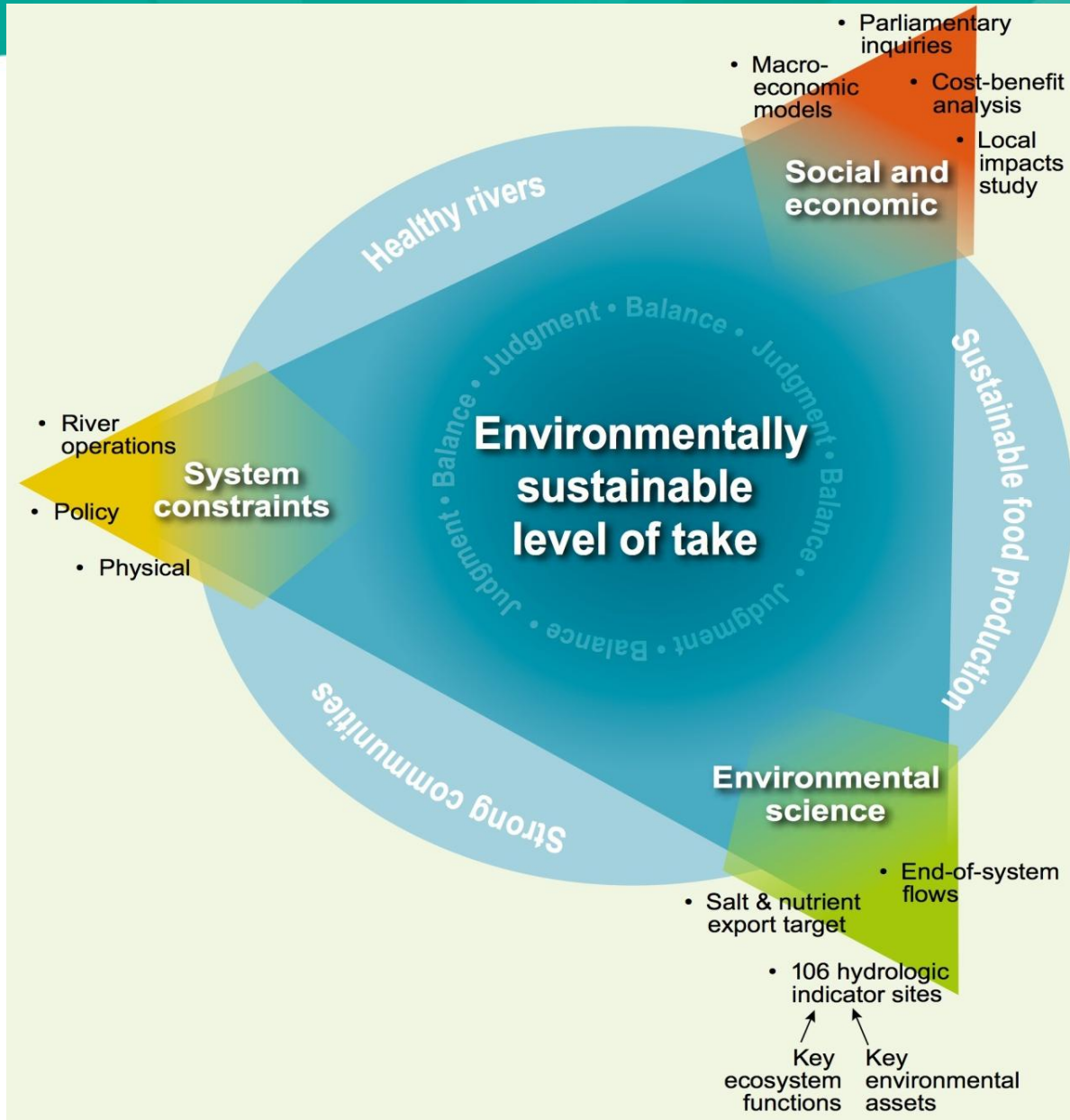
- Reform is needed - manage the Basin as a whole, recognising uniqueness of regions
- Better recognise the social, cultural & economic role of the Basin
- Need to recognise past effort and understand the potential impacts of water reform
- Many different views on how to achieve balance and the scale of change required
- Concerns about practical use of environmental water and whether it can be physically delivered.
- Concerns about effects of buy backs on communities



Australian Government



The Central Task



What has changed since the Guide?

- Improved baseline
- More robust modeling
- 7 year transition – progressive implementation
- SDLs in 2019
- 2015 review point
- Adaptive management
- Localism – placing communities and local knowledge at the heart of the solutions

How much more environmental water?

Current thinking (baseline year 2009):

Basin wide

- 2,800 GL/y (long-term average)

However:

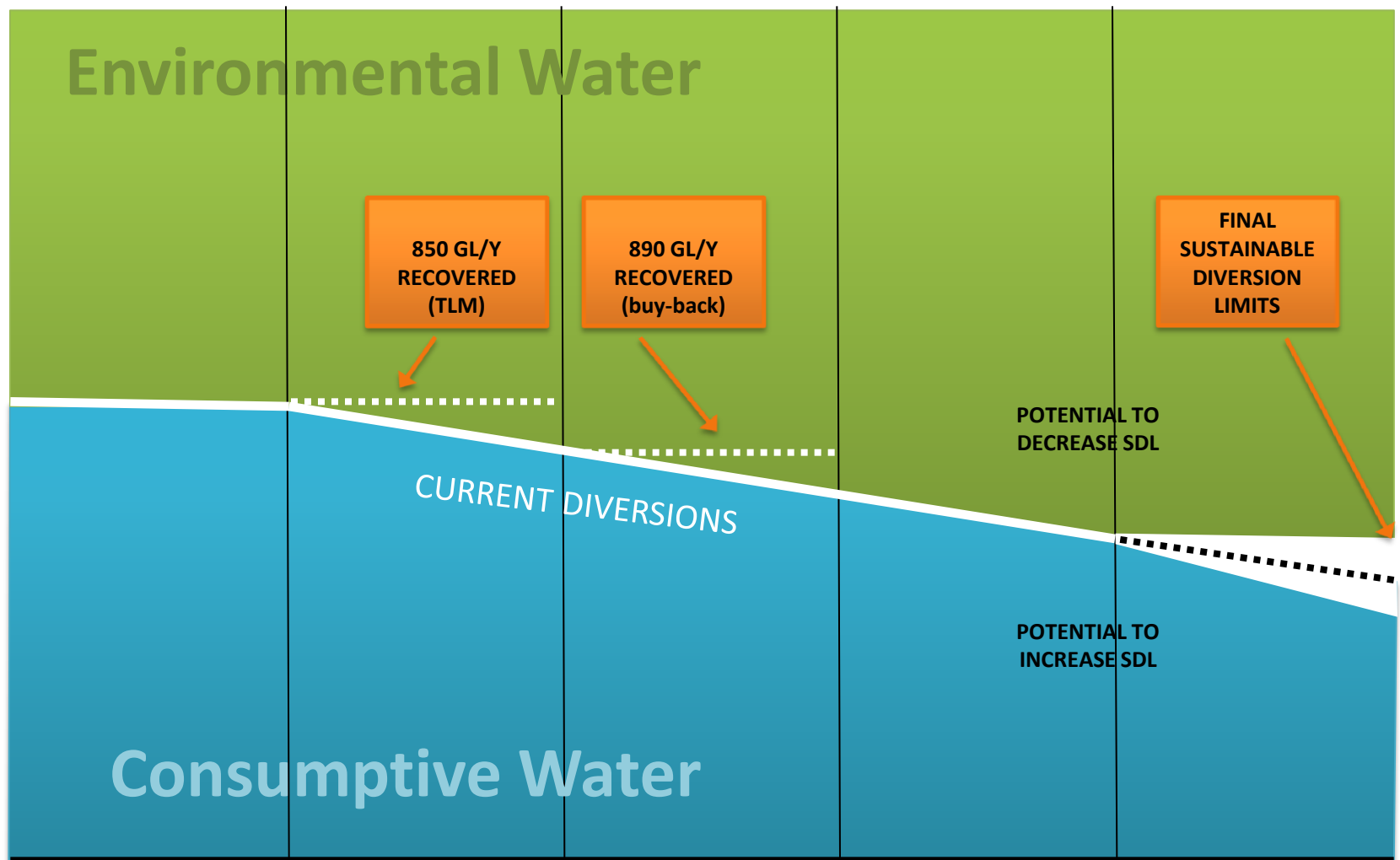
- since 2009; 890 GL recovered (March 2011)

Therefore by 2019:

- a little over 1,900 GL to be recovered in 2 phases

SDLs set at catchment scale

Recovery of environmental water



1995

CAP
beginning
of sustainability

2004

National Water
Initiative commences

2009

850 GL/Y
RECOVERED
(TLM)

890 GL/Y
RECOVERED
(buy-back)

2012

Basin Plan
adopted

2015

Basin Plan
checkpoint

2019

Basin Plan
fully Enforced
sustainable Diversion
Limits(need to be met)

POTENTIAL TO
DECREASE SDL

POTENTIAL TO
INCREASE SDL

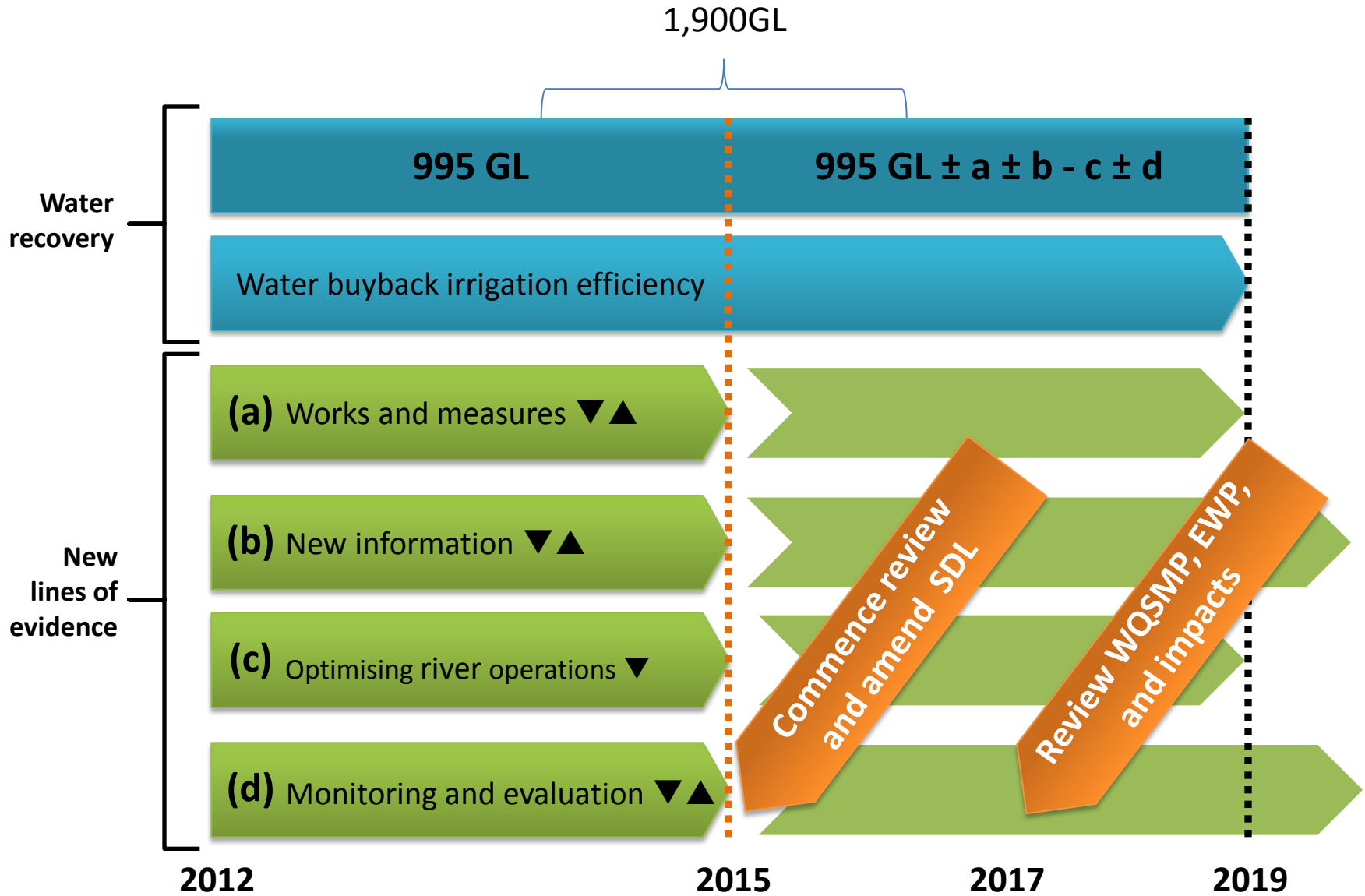
Environmental Water

Consumptive Water

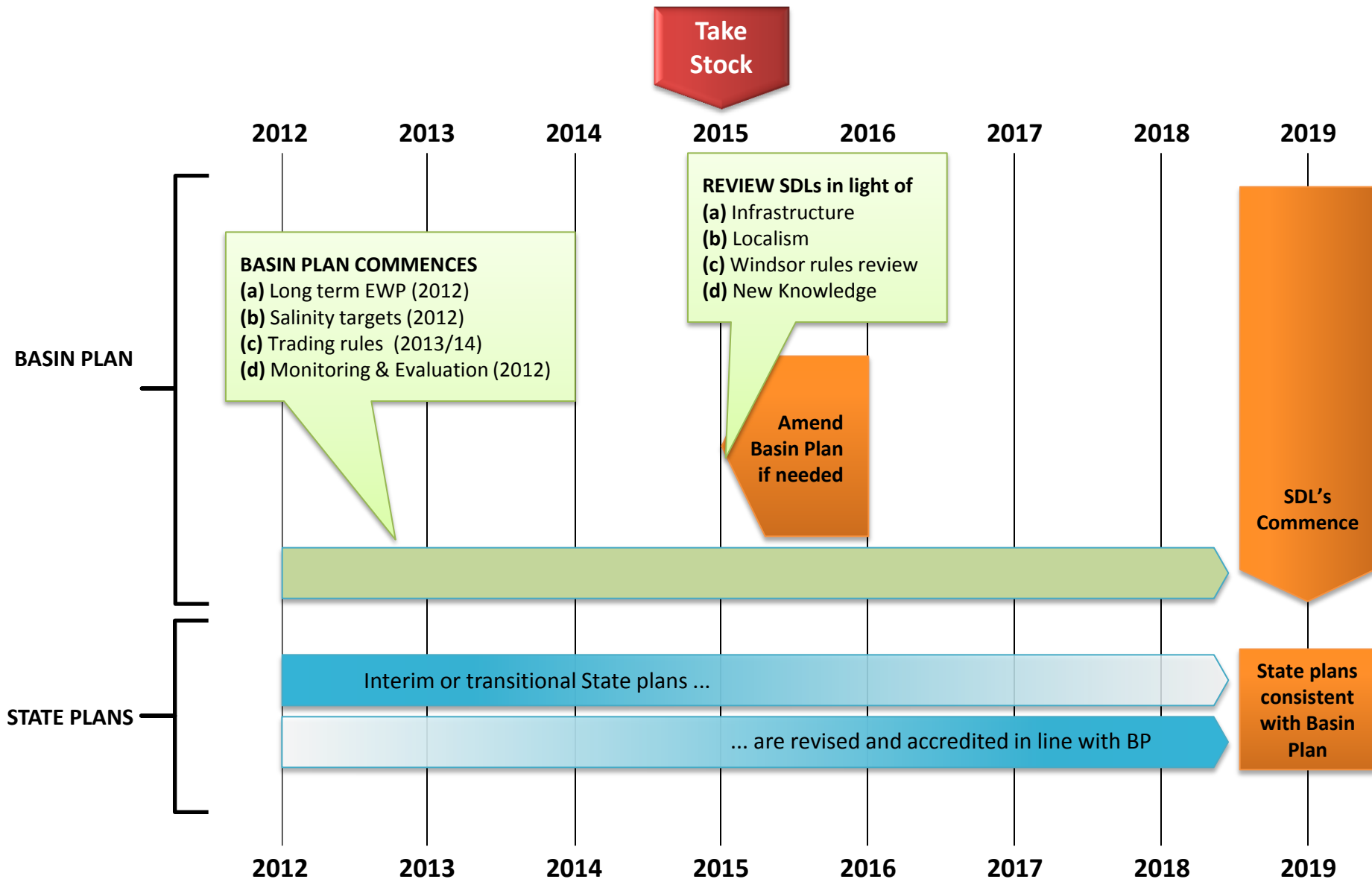
CURRENT DIVERSIONS

FINAL
SUSTAINABLE
DIVERSION
LIMITS

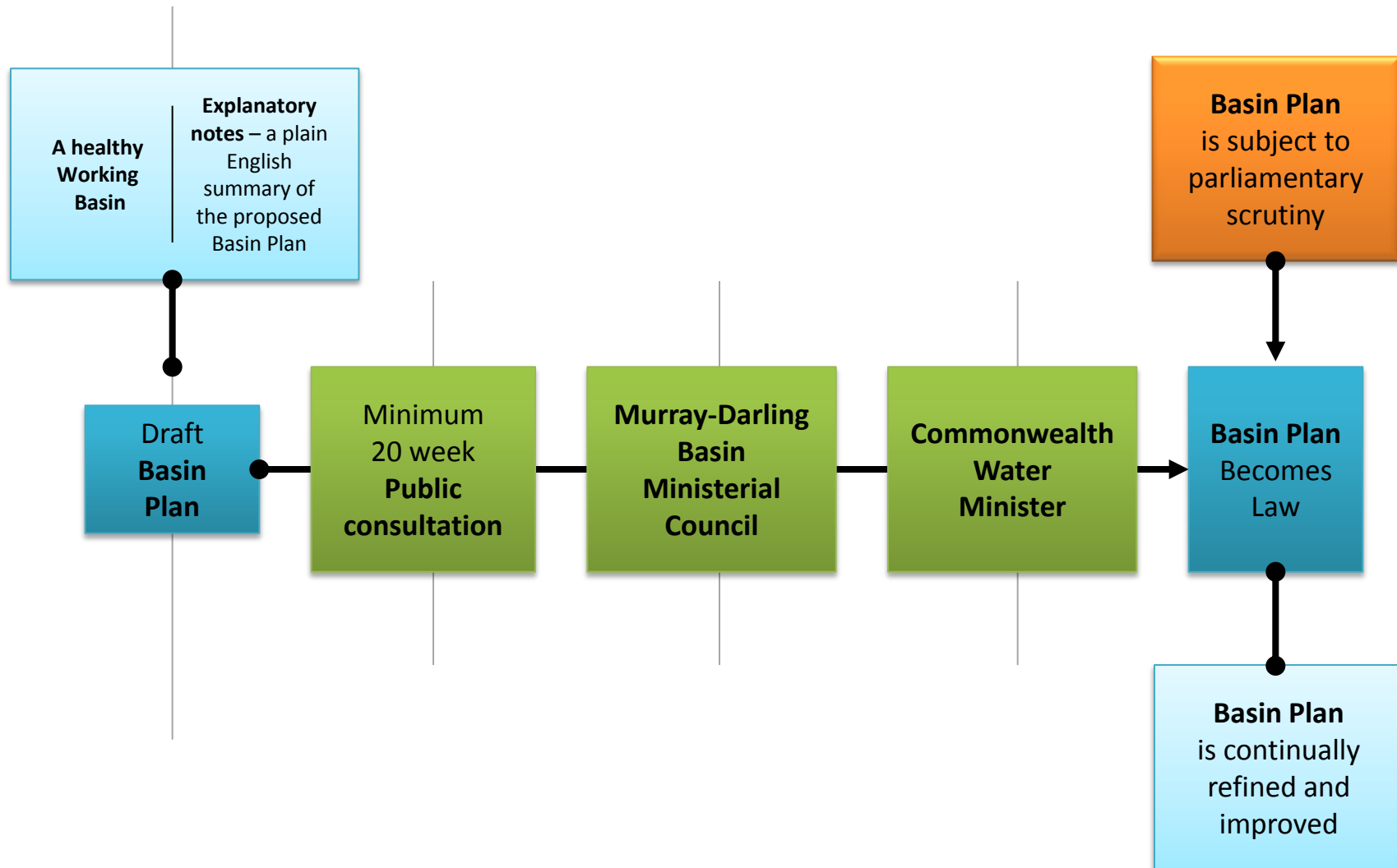
An Adaptive Plan



Basin Plan Pathway



What's next for the proposed Basin Plan?





Australian Government



Thank You